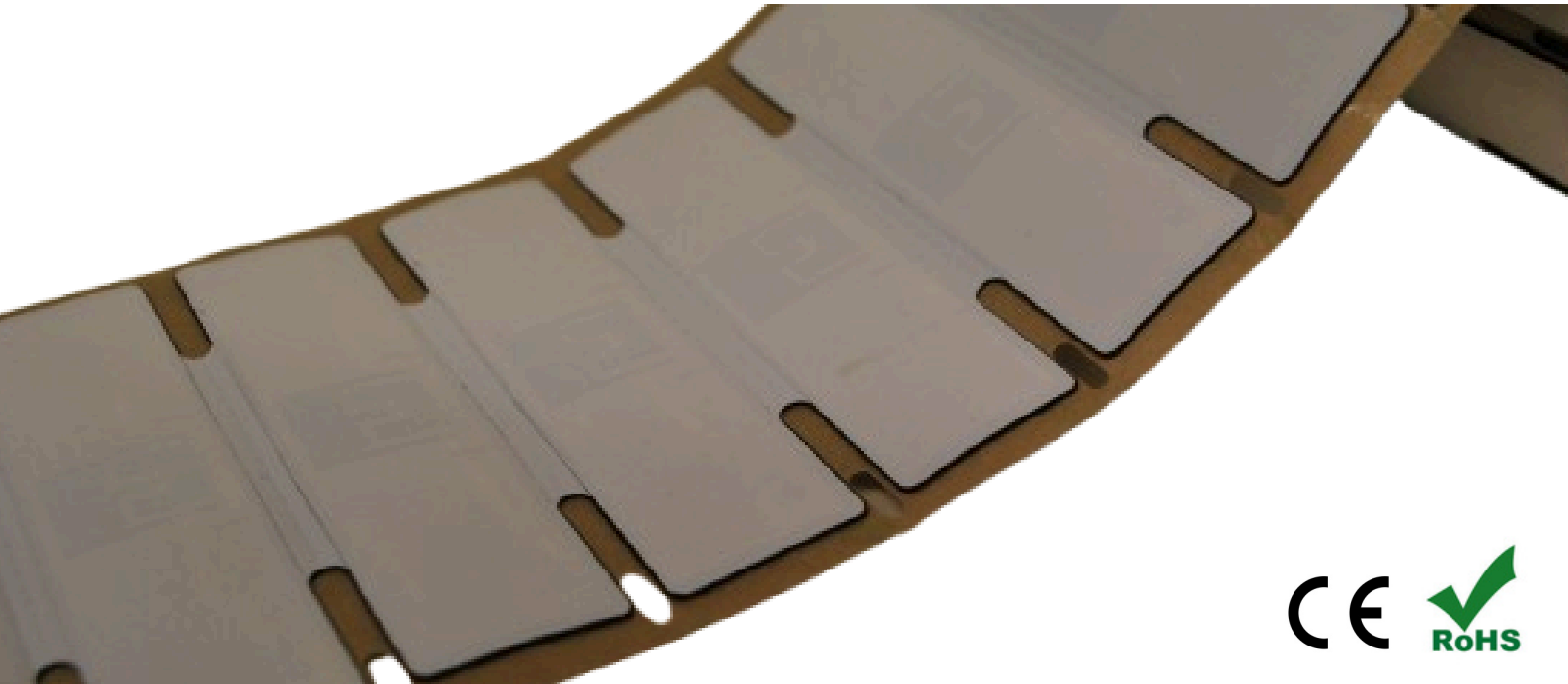


RFID LABELS FOR METAL BINS



The Global Tag RFID labels for metal bins are the ideal solution for waste management, tracking and monitoring of metal bins and containers.

Made from durable materials, they are designed to withstand impacts, weather conditions, and chemicals typically found in waste environments.

Customization options include advanced memory encoding, numbering, and logo printing are available.

MECHANICAL AND ENVIRONMENTAL SPECIFICATIONS

Mounting System: Adhesive (3M)

Weight: Depends on size

Material: EVA (ethylene vinyl acetate) or PET material

Color: Generally white – Printing options available on request

Class Protection: IP67 (Totally protected against ingress of solid / Protected against short periods of immersion in water.)

Weather Ability: Very Good, including UV resistance and sea water

Expected lifetime: Years in normal operating conditions

Delivery format: In reel

Storage Temperature: -55°C (for 3h) to +100°C (for 2h) / -67°F (for 3h) to +230°F (for 2h) (for any other particular request contact us)

Operating Temperature: -20°C to +70°C / 4°F to +158°F

TYPES OF RFID CHIPS:

UHF: Available with Monza R6; Monza R6-P

PRINTING AND CUSTOM OPTIONS:

Printing options: serial progressive number from database, randomize number from database text and Barcode or QRCode. Other customizations are available on request.

Silk Printing: 2-colors printing logo.

Pre-Encoding: Customer specific encoding of EPC or User Memory (also from Database). Locking permanently or with password. Insert into Database TID code.

INSTALLATION MODE:

With 3M glue: when mounting the tag with adhesive background, clean and dry the surface to obtain the maximum bond strength.

ORDER INFORMATION:

PRODUCT CODE WET-INLAY:

For more information, please contact us:

Global Tag Srl – Via Zanardelli 13/A 25062 Concesio (BS) - Italy

P +39 030 2005259

M wastemanagement@global-tag.com

DISCLAIMER:

The information in this document is subject to change without notice. Global Tag assumes no responsibility for any errors that may appear in this document. Application recommendations are guidelines only - actual results may vary and should be confirmed. This is a general-purpose product not designed or intended for any specific application. Global Tag Srl or its subsidiaries are not responsible for the performance or support of third party products and does not make any representations or warranties whatsoever regarding quality, reliability, functionality, or compatibility of these devices or products.

© Copyright 2025 - Global Tag Srl