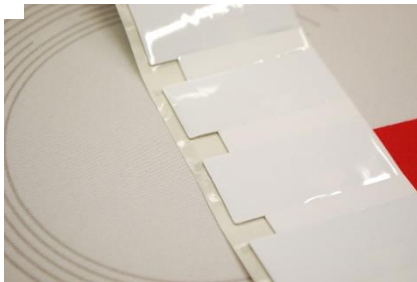


PRODUCT DATASHEET

GLOBAL TAG METALLY 60x27



Global Tag **METALLY 60x27**, UHF On-Metal label, has been designed for indoor and outdoor uses where good performance and easy and quick installation on metal surfaces are required, as well as the possibility to print the label in loco.

The PET surface and the strong backside glue make the tag a great solution for both indoor and outdoor use.

Metally is suitable for maintenance application, tracking of metal pipes, container traceability as well as every application in which the main requirement is a tag for metal surfaces.



MECHANICAL AND ENVIRONMENTAL SPECIFICATIONS

Dimensions: 60x27mm

Mounting System: Adhesive (3M)

Weight: 1,5g

Surface Material: EVA or PET Material

Color: Generally white color – Printing options available on request

Class Protection: IP67 (Totally protected against ingress of solid / Protected against short periods of immersion in water.)

Storage Temperature: -55°C (for 3h) to +100°C (for 2h) / -67°F (for 3h) to +230°F (for 2h) (for any other particular request contact us)

Operating Temperature: -20°C to +70°C / 4°F to +158°F

Weather Ability: Very Good, including UV resistance and sea water

Delivery format: in reel

Expected lifetime: 10 Years in normal operating conditions

Certificate: EPC Global

CHIP SPECIFICATION AVAILABLE

	UHF 860-960MHz
Device type	Class 1 Gen 2
Air interface protocol	ISO18000-6C
IC Type Available	Monza R6; Monza R6-P
Read Range	Up to 6 meters

CUSTOMIZATION OPTIONS

Printing options: serial progressive number from database, randomize number from database text and Barcode or QRCode. Other customizations are available on request.

Silk Printing: 2-colors printing logo.

Pre-Encoding: Customer specific encoding of EPC or User Memory (also from Database). Locking permanently or with password. Insert into Database TID code.



INSTALLATION MODE

With 3M glue: when mounting the tag with adhesive background, clean and dry the surface to obtain the maximum bond strength.

APPLICATION NOTE

On-Metal Bins management: **METALLY 6027** can be used to track and manage bins even when they are outdoors or in harsh conditions.

On Metal Waste bin management: **METALLY 6027** can be applied on-metal waste bins.

Logistics, supply chain and Yard management: **METALLY 6027** is suitable for track and monitor container, pallets, carts, construction vehicles or again other metallic components.

Maintenance On-Metal assets: **METALLY 6027** is a tag designed to improve maintenance service with easy method to install on –metal surface.

Container traceability: **METALLY 6027** is the best solution to detect, track and trace metal container with rapidity and precision.

ORDER INFORMATION

PRODUCT CODE: GT-MTLLY6027-MR6P

For printing options or for produce transponder with different color or with other type of customization... contact us for more information:

Global Tag Srl – Via Zanardelli 13/A, 25062 Concesio (BS) - Italy

P +39 030 2005259

S global-tag

W www.global-tag.com

M sales@global-tag.com

DISCLAIMER

The information in this document is subject to change without notice. Global Tag assumes no responsibility for any errors that may appear in this document.

Application recommendations are guidelines only - actual results may vary and should be confirmed. This is a general purpose product not designed or intended for any specific application.

Global Tag Srl or its subsidiaries are not responsible for the performance or support of third party products and does not make any representations or warranties whatsoever regarding quality, reliability, functionality, or compatibility of these devices or products.

© Copyright 2024 - Global Tag Srl